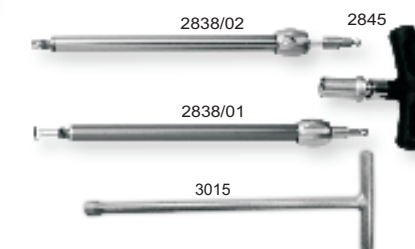
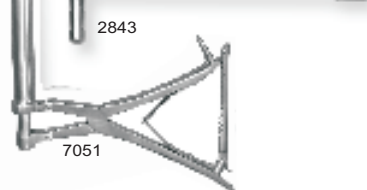
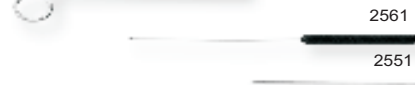
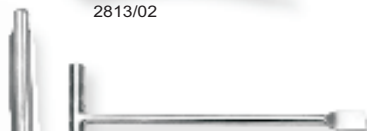
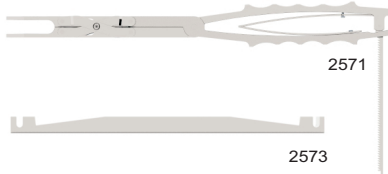
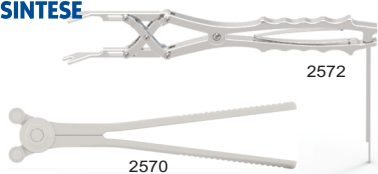


1803/02	CHAVE SEXTAVADA PARA TORQUÍMETRO 13 N <i>Hexagonal Wrench for Dynamometer</i>	2576/01	CHAVE SEXTAVADA PARA GANCHO <i>Hexagonal Wrench For Hook</i>
2836	CHAVE CONTRA TORQUE <i>Counter Torque Wrench</i>	2831/01	GUIA REBAIXADOR DA HASTE <i>Rod Reduction Guide</i>
2839	CHAVE REDUTORA <i>Reducing Wrench</i>	2832	FRESA MACHO Ø 5,5 mm <i>Tap Reamer</i>
2840	FRESA MACHO DE Ø 6,5 mm <i>Tap Reamer</i>	2834/01	CHAVE SEXTAVADA POSICIONADORA DE Ø 4,5 mm <i>Hexagonal Wrench</i>
2841	PERFURADOR PONTA QUADRADA <i>Perforator With Squared Extremity</i>	7050	MEDIDOR TORQUÍMETRO 13N <i>Dynamometer Gauge</i>
2553	MEDIDOR <i>Gauge</i>	BARRA MALEÁVEL <i>Malleable Bar</i>	
2844	INICIADOR DE FURO <i>Hole Starter</i>	REF.	COMPR. mm Length
2846	CHAVE CONTRA TORQUE <i>Torque Wrench</i>	2619/02	70
		/03	100



ORTOSINTESE

INSTRUMENTAL DE COLUNA EVOLUTION PLUS *Evolution Plus Spinal Instruments*



2551	MEDIDOR PINO <i>Ball Tip Feeler</i>
2561	GUIA APALPADOR <i>Feller Guide</i>
2567	PINÇA PARA HASTE Ø 5,8 mm <i>Rod Clamp</i>
2568	PINÇA PARA HASTE Ø 4,0 mm <i>Rod Clamp</i>
2569	PINÇA PARA GANCHO DTT <i>DTT Hook Clamp</i>
2570	MODELADOR DA HASTE <i>Stem Bender</i>
2571/01	PINÇA COMPRESSORA INFINITY <i>Infinity Compressing Clamp</i>
2572/01	PINÇA DISTRATORA INFINITY <i>Infinity Distractor Clamp</i>
2573/01	MODELADOR DIREITA <i>Right Bender</i>
2573/02	MODELADOR ESQUERDA <i>Left Bender</i>
2813/02	PINÇA DE PRESSÃO <i>Grippers</i>

2838/01	CHAVE P/ PARAFUSO MONOAXIAL <i>Monoaxial Screw Wrench</i>
2838/02	CHAVE P/ PARAFUSO POLIAXIAL <i>Poliaxial Screw Wrench</i>
2843	CHAVE DE RUPTURA ESCONDILO <i>Rupture Wrench</i>
2845	CABO EM "T" C/ ENGATE RÁPIDO <i>Fast Assembly "T" Handle</i>
3015	CHAVE CACHIMBO 8,0 mm <i>"T" Wrench</i>
7051	PERSUADER <i>Persuader</i>