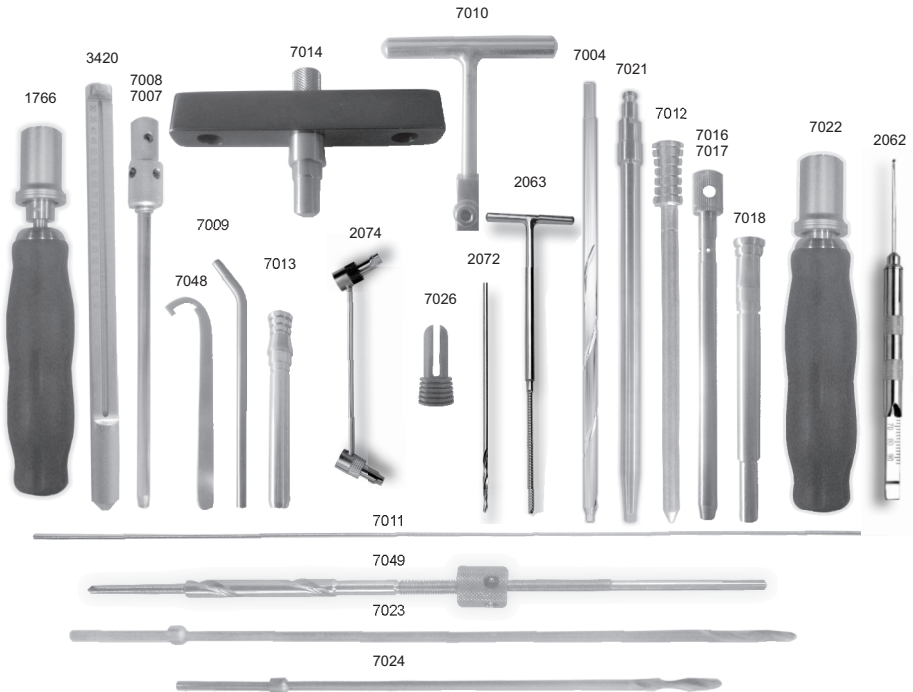


INSTRUMENTAL PARA PLACA DISTAL DE FÊMUR MIPLATE

Miplate Femoral Distal Plate Instruments



1766	TORQUÍMETRO 3,5 Nm P/ SISTEMA LCP GRANDES FRAGMENTOS <i>Torque Wrench for Large Fragments System LCP</i>
2062	MEDIDOR DE PARAFUSO GRANDES FRAGMENTOS <i>Gauge for Screw</i>
2063	FRESA MACHO 4,5 mm <i>Reamer</i>
2072	BROCA 3,2 X 150 mm <i>Drill</i>
2074	GUIA DE BROCA Ø 3,2 mm <i>Drill Guide</i>
3420	MEDIDOR 180 mm <i>Gauge</i>
7004	CHAVE SEXTAVADA 3,5 mm-LONGA COM STOP <i>Long Hexagonal Wrench With Stop</i>
7007	GUIA Ø 4,5 MM COM ROSCA <i>Guide with thread Ø 4,5 mm</i>
7008	GUIA Ø 2,5 MM COM ROSCA <i>Guide with thread Ø 2,5 mm</i>
7009	CHAVE CURVA <i>Curved Wrench</i>
7010	CHAVE EM T COM ENGATE RÁPIDO <i>T Wrench With Quick Coupling</i>
7011	FIO C/ ROSCA NA PONTA Ø 2,0 mm x 350 mm <i>Threaded Wire With Treaded end</i>

7012	PUNÇÃO Ø 7,4 MM <i>Puncture Ø 7,4 mm</i>
7013	GUIA CANULADO Ø 7,5 (CURTO) <i>Cannulated Guide Ø 7,5 (Short)</i>
7014	TRAVE POSICIONADORA <i>Positioning Bar</i>
7016	GUIA CANULADO Ø 2,5 com rosca <i>Cannulated Guide Ø 2,5 with thread</i>
7017	GUIA CANULADO Ø 4,5 com rosca <i>Cannulated Guide Ø 4,5 with thread</i>
7018	GUIA CANULADO Ø 7,5 (LONGO) <i>Cannulated Guide Ø 7,5 (Long)</i>
7021	CHAVE SEXTAVADA 3,5 MM <i>Hexagonal Wrench</i>
7022	CABO AXIAL COM ENGATE RÁPIDO <i>Axial Cable with Fast Assembly</i>
7023	BROCA Ø 4,3 MM X 290 MM <i>Drill</i>
7024	BROCA Ø 4,3 MM X 215 MM <i>Drill</i>
7026	TAMPÃO <i>Plug</i>
7048	CHAVE UNHA DE GATO <i>Wrench</i>
7049	GUIA DE REDUÇÃO <i>Reduction Guide</i>